

Post Mounting – Patio Heater

DESCRIPTION:

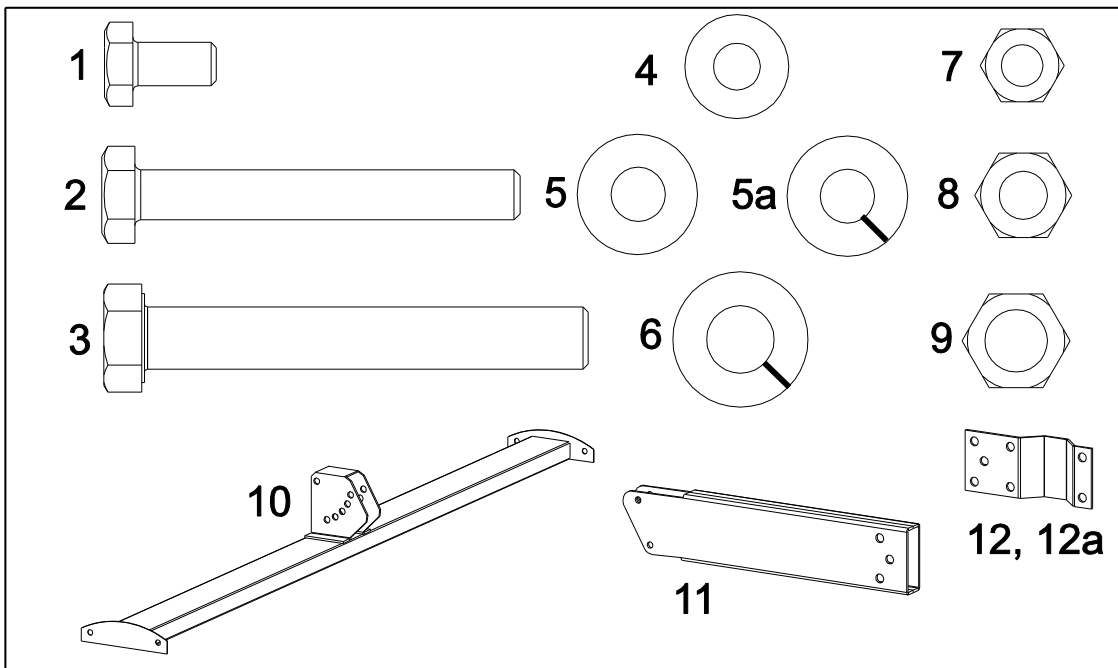
These are accessory kits designed to mount a single patio heater to either a 3" or 4" diameter post. Follow all installation and operation instructions supplied with each heater for Warnings, Clearances to Combustibles, Electrical/Gas Connections and all other pertinent information not shown in these instructions.

Kit No. 44560600 – 3" OD Post

Kit No. 44560609 – 4" OD Post

Kit Components

Item No.	Part No.	Description	Qty.
1	02140040	Screw, Hex Head 1/4-20 x 1/2"	4
2	02106060	Screw, Hex Head 5/16-18 x 2-1/4"	2
3	02112050	Screw, Hex Head 3/8-16 x 2-3/4"	7
4	02129100	Washer, Flat 1/4"	8
5	02129110	Washer, Flat 5/16"	2
5a	02130110	Washer, Spring Lock 5/16"	2
6	02130130	Washer, Spring Lock 3/8"	7
7	02167019	Locknut, Hex 1/4-20	4
8	02127110	Nut, Hex 5/16-18	2
9	02127130	Nut, Hex 3/8-16	7
10	44560650	Hanger Rail Assembly (painted)	1
11	44560730	Hanger Arm Assembly (painted)	1
12	44560639	Clamp, Post Hanging - 3"OD Tube (painted)	2
12a	4456074-9	Clamp, Post Hanging - 4"OD Tube (painted)	2
13	43878750	Instruction Sheet	1



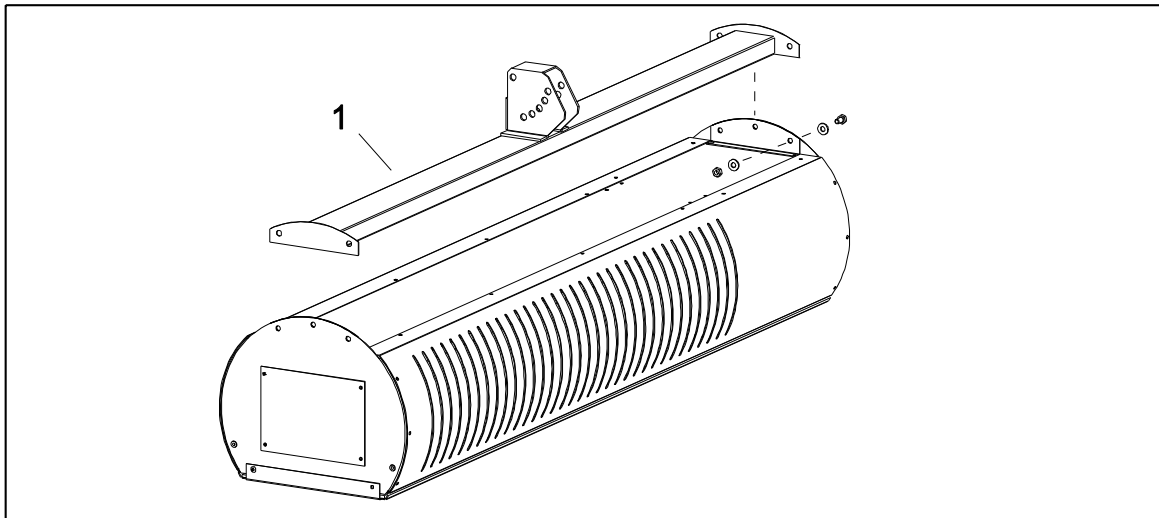
Post Mounting – Patio Heater

ASSEMBLY INSTRUCTIONS:

Attaching the Hanger Rail Assembly

1. Position the hanger rail assembly onto the heater and attach using (4) 1/4-20 x 1/2" screws, flat washers and locknuts supplied in the kit. Torque to 76 in • lbs (8.5 Nm).

Care must be taken to plan and orient the heater gas supply during installation. The hanging arm attaches to the hangar rail assembly where the multiple holes are. The heater pivots away from the hangar rail assembly. See also 4.

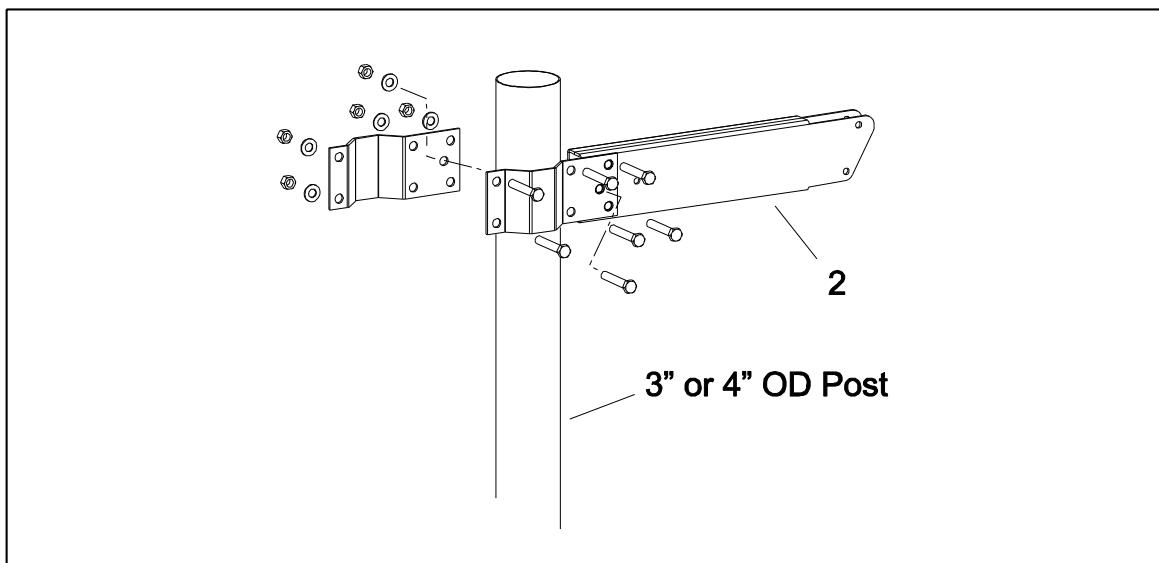


Post Mounting – Patio Heater

Attaching the Hanger Arm Assembly to the Post

2. The heater must only be attached to posts made out of noncombustible materials. Typical post to be used are 3 in or 4 in diameter 16 gauge steel tubes with a minimum wall thickness of 0.063 inches (1.6 mm). Material choices can be galvanized or aluminized steel as well as stainless steel. Hot rolled steel must not be used. Prior to mounting the heater the pole must be permanently secured using best building practices to be able to support the weight and torque of the heater.

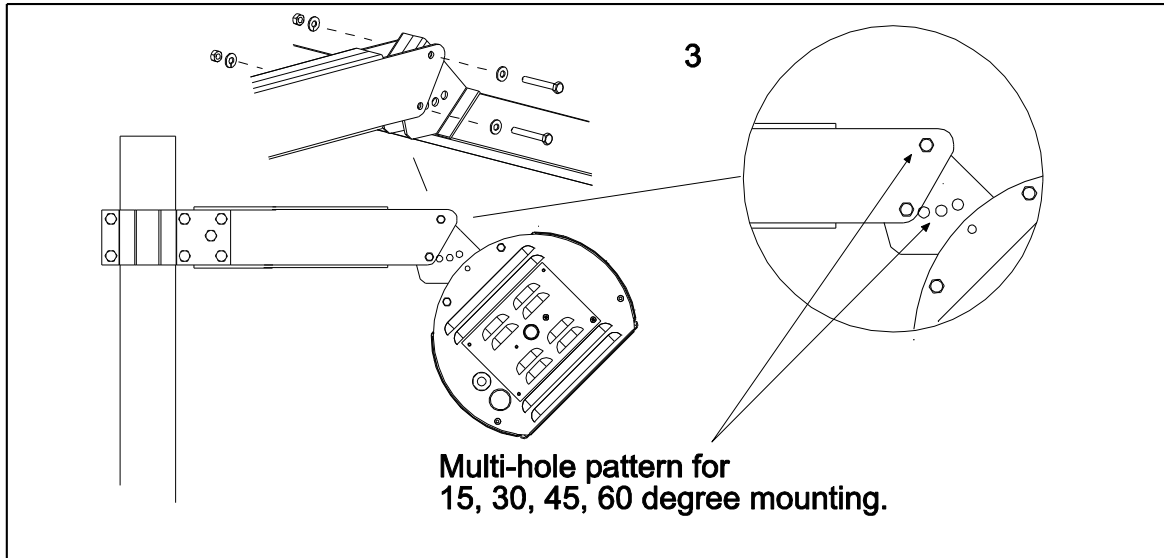
Attach the hanger arm assembly to the 3" OD or 4" OD post at desired location using the (2) clamps, and (7) 3/8-16 x 2-3/4" screws, spring lock washers and nuts. Torque to 23 ft • lbs (31 Nm).



Post Mounting – Patio Heater

Mounting the Heater

3. Attach the heater to the end of the hanger arm assembly using (2) 5/16-18 x 2-1/4" screws, flat washers, spring lock washers and nuts. Torque to 13 ft•lbs (17.5 Nm). The heater can be suspended at mounting angles of 15, 30, 45 and 60 degrees utilizing the multi-hole pattern in the center hanger clamp.



4. The heater is now ready for gas and electrical connections per installation and operation instructions provided with the heater.

